

Accessories for AMT211 Surface Roughness Tester



Except for flat surface, we recommend the instrument equipping with suitable height stand if the flat surface is too small for placing the complete device, a suitable height stand is still required

Image	Description
	<p>KS55 - Extending Rod, Extending the length of sensor (extending 50mm) , can add 3 pieces in maximum.</p>
	<p>KS90 - Right Angle Rod, change the direction of sensor to make it move in transverse , mostly for surface of particular groove such as crankshaft etc.</p>
	<p>KS100 - Small Hole Sensor, for most of the plane, inclined plane, cone work piece, and measures in holes of a diameter $>5\text{mm}$ and a depth $<15\text{mm}$.</p>
	<p>KS110 - Curved Surface Sensor, for convex or concave surfaces with a curvature radius of 3 mm or more.</p>
	<p>KS120 -very small hole Sensor, in holes of a diameter $>2\text{mm}$ and a depth $<9\text{mm}$..</p>
	<p>KS130 - Groove sensor, measuring in grooves with a width greater than 3 mm and a depth less than 3.2mm, the distance from the stylus tip to the front edge is 3mm.</p>
	<p>KS160 - Axe type Sensor, measuring in grooves with a width greater than 3 mm and a depth less than 3.2mm, the distance from the stylus tip to the front edge is 1.6mm. Measuring for flat surface when used for split type roughness tester.</p>
	<p>KS131 - Deep Groove Sensor, in grooves with a width greater than 3 mm and a depth less than 10 mm. and measures steps less than 10mm in height.</p>
	<p>KS131P - 7mm Groove & Curved Sensor, in grooves with a width $> 1.5\text{ mm}$ and a depth $< 7\text{ mm}$. and measures steps less than 10mm in height.</p>
	<p>KS132 - 13mm Groove & Curved Sensor, in grooves with a width $> 2\text{mm}$ and a depth $<13\text{mm}$, and measures steps less than 15mm</p>
	<p>KS133 - 13mm narrow Groove Sensor, in grooves with a width $> 1.2\text{mm}$ and a depth $<13\text{mm}$, and and measures steps less than $<15\text{mm}$</p>
	<p>KS135 - 23mm Groove Sensor, in grooves with a width $> 2\text{mm}$ and a depth $<23\text{mm}$. and measures steps less than $<25\text{mm}$</p>



KA520 -Metal Substrate Working platform, elevating, convenient and stable for test process.

1. Height Adjustable: $200\pm 1\text{mm}$
 2. Return error: $\leq 1/6$ round of lifting wheel
 3. Base Size: $330\text{mm}\times 295\text{mm}\times 12\text{mm}$
 4. Rotation angle: 80°
- Packing Size & weight: $42*21*15\text{cm}$ 5KG



KA620 -Marble Substrate Working Platform, include V block

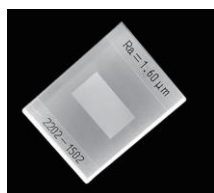
1. Height Adjustable: $300\pm 1\text{mm}$
 2. Return error: $\leq 1/6$ round of lifting wheel
 3. Marble Size: $400\text{mm}\times 250\text{mm}\times 70\text{mm}$
 4. Rotation angle: 80°
- Packing Size & weight:
column $54*24*15\text{cm}$, 4.5kg; marble base $43.5*28.5*10\text{cm}$, 23kg



Height Gauge, adjust height and direction of a tester. Especially suit for split type surface roughness tester, Adjustable maximum height: 300mm.



Magnetic Stand, arm length: about 200mm including joint. The column: about 200mm in height including base. Adjustable maximum height: 150mm
Rod of the magnetic adaptor (the part attached to the tester) $\varnothing 8\text{mm}$



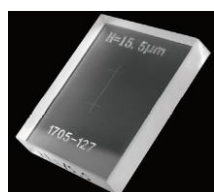
Standard Roughness Calibration Block Multi-reticle specimen(Square Wave)

Made by optical glass, with high hardness, high accuracy standard roughness value, anti-scratch, has longer life than metal roughness block.

Meet standard GB/T19067.1-2003 and ISO5436-1:2000

Approximation: $R_a=0.1\mu\text{m}$, $0.2\mu\text{m}$, $0.4\mu\text{m}$, $0.8\mu\text{m}$, $1.6\mu\text{m}$, $3.2\mu\text{m}$, $6.4\mu\text{m}$

Customized Value and Sine Wave available, welcome to inquire.



Roughness Calibration Block Single engraved lines

Meet standard GB/T19067.1-2003 and ISO5436-1:2000

Approximation: $H_{10}=20\mu\text{m}$ (roughness tester use filter D-P, test RT value)

Customized Value available, welcome to inquire.



Mini thermal printer

Size: $108*76*46.6\text{mm}$

External printer, interface: USB, Blue Tooth, the Baud rate will be set accordingly for connecting tester before delivery. suitable for our surface roughness tester, hardness tester, thickness gauge. Paper size: width is $(57.5\pm 0.5)\text{mm}$, diameter is 30mm

AMTAST AMT211 SURFACE ROUGHNESS TESTER



Very Small Sensor KS120



Small Hole Sensor KS100



13mm Groove & Curved Sensor KS132



Axe Type Sensor KS160



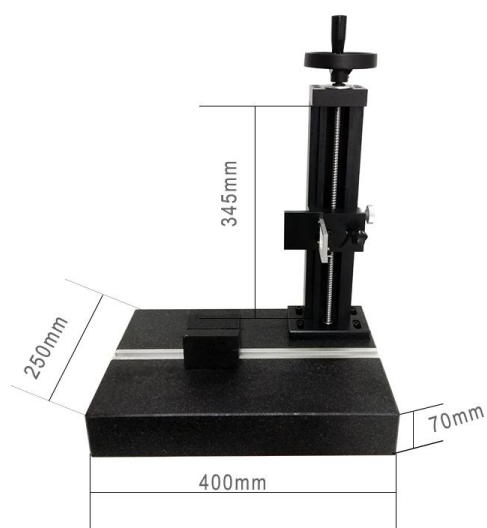
Calibration Specimen in Box



Height Gauge Adaptor Steel Bar (attachment to height gauge): 9.04*9.10 *27mm(H*W*L)



KA520 - Metal Substrate Working platform



KA620 - Marble Substrate Working Platform